



**BATYI AUTOMOTIVE COMPONENT SUPPLY**



# **Welcome to BACS (Pty) Ltd**

**Our Customer Our Future**





# Company Background

- The company was established:** 2017
- Ownership:** 100% black owned with Level 1 BBBEE
- Type of Entity:** (Pty) Ltd, QSE
- Business Owner:** Lindisipho Nicholson Batyi (Sipho)
- Qualification:** ND Mechanical Engineering
- Experience:** Automotive and Mining Industry
- Mobile:** 0734231905, **email:** sipho.batyi@bacs.co.za, **website:** www.bacs.co.za
- Company Registration Number:** 2017/248819/07
- Value Added Tax Number (VAT):** 4200278945
- Compliance:** ISO9001:2015
- Number of employees:** 32



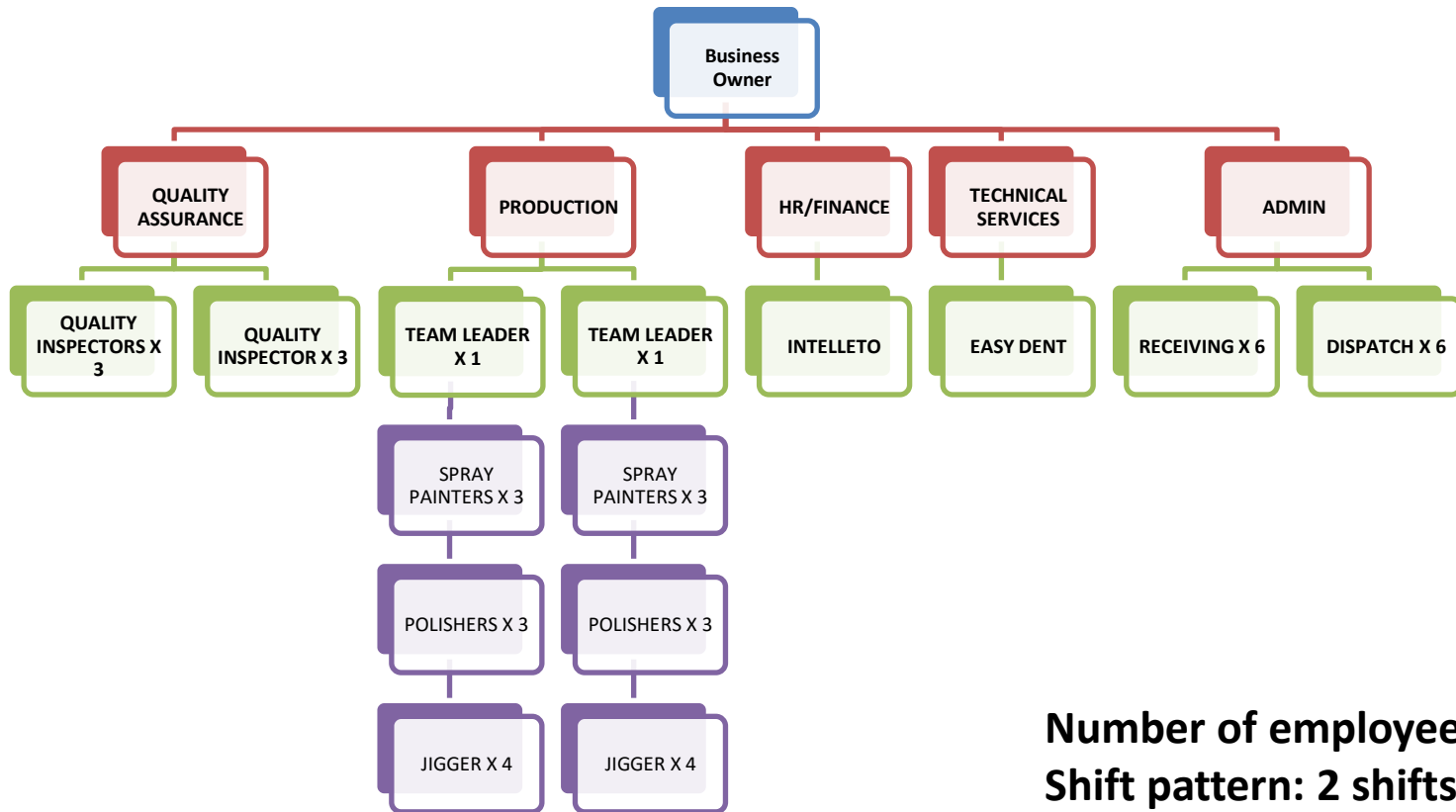
# Vision, Mission and Values

---

- Vision: provide best value-add-services for customers through innovation and experience.**
- Mission: to give customers the most compelling value-add-service experience.**
- Values: integrity, passion, innovation and respect.**



## Who are we (Team)



Number of employees: 32  
Shift pattern: 2 shifts



# Our Products

- ❑ Spray Painting of automotive plastic components for the automotive industry (*OEMs, after market and Tier One Suppliers*) through **solvent base** process.
- ❑ Average demand per day is 500 vehicles.



Radiator Grill Carrier



Upper Bar



Centre Bar



Lower Bar



**BATYI AUTOMOTIVE COMPONENT SUPPLY**



## Our Site



**Physical Address:**  
**220 Koos De La Rey Street**  
**Pretoria North**

**Operational area:**  
**800 m2**

**Personnel:**  
**32 Employees**

**Site Output:**  
**500 painted parts per day**



## **Key Customers (Target Market)**

---

- OEM's – Gauteng – FMCSA, BMW and Nissan**
- Tier1's – Gauteng – MSSL Rosslyn, Automold**
- OEM's – Other provinces – VWSA, Toyota and Mercedes Benz**
- Tier1's – Other Provinces – MSSL Durban**



## **Current Customers**

---

- ❑ Current Customers – Easy Dent Remover based in Pretoria North (Supplying MSSSL RSA and Ford components).
- ❑ Annual sales: 120 000 pcs per year.





# Short, Mid and Long-Term Strategy

---

- ❑ Spray paint interior and exterior trim plastic parts – short term plan.
- ❑ Injection molding and spray painting of exterior and interior trim – mid-term plan
- ❑ Steering wheel magnesium die casting – long term plan.
- ❑ Establish business units by customer products



# New Programme- Ford Ranger

## ☐ WILDTREK



**Radiator Grill Assembly**



## Our Equipment

2 Spray Booths



Backup generator



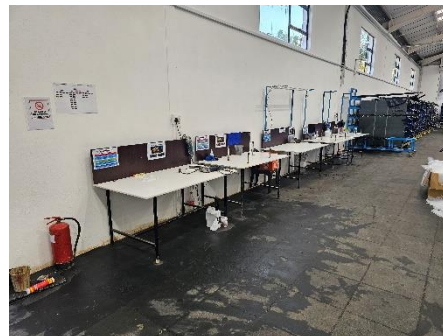
2 Baking Ovens



Forklift



Polishing Station



WIP Racking



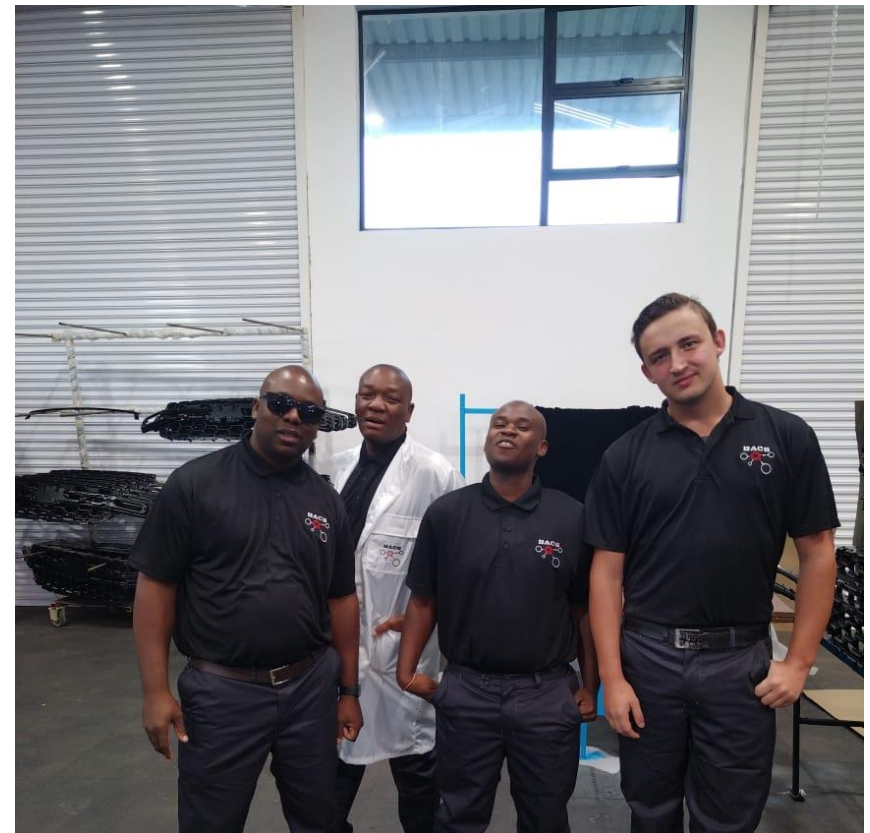


## Our Spray Paint Operation

### Operation

- Spray paint molded frames Carriers, Lowers, Uppers and Centers.

### Spray Painters





## Our Spray Paint Operation

### Operation

- Hold frames in position for spray painting

### Paint Jigs





## Our Spray Paint Operation

### Operation

- Spray paint frames to Ebony Black, Asphalt Black and Bolder Grey

### Spray Paint Booth





## Our Spray Paint Operation

### Operation

- Bake painted frames per cycle.
- Leave to cure as per customer requirement.

### Spray booth – Baking Oven





## Our Spray Paint Operation

### Operation

- Remove dirt and fiber for a smooth surface finish.

### Polishing Station

