

# Pioneer Hand Wash Stations

*Our wash basins are ideal for use in construction sites and events.*

*They come with clean and dirty water tanks and are easy to fill and clean.*

*A foot pump allows for simple, hygienic water flow activation.*

PA429A

Stand Alone Sanitiser  
Dispenser



PA236SA

40L Wash Basin Tank



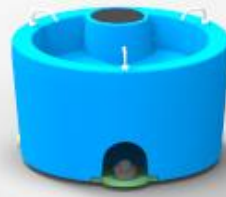
LB076SA

20L Wash Basin Tank with  
Jerry Can



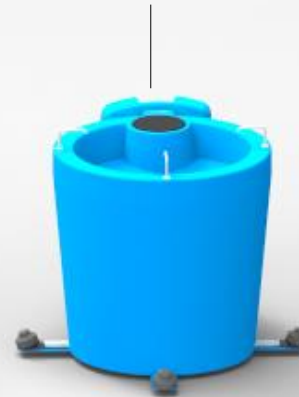
PA431A

Kiddie Hand Wash basin



PA351SA

300L 3 Station stand alone  
wash basin with 60l  
removable water caddy



PA225A

90L Stand Alone  
Wash Basin



## LB076SA

20L Wash basin tank with clean and dirty water tank



R1, 630.00 Ex. VAT



## PA351SA

300l 3 Station stand alone wash basin with 60l removable water caddy



R4, 100.00 Ex. VAT



## PA225A Standard

180l Stand alone wash basin with 90l clean and 90l dirty water tank

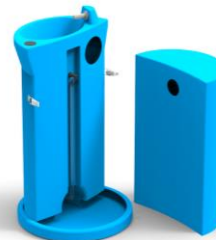


R3, 900.00 Ex. VAT



## PA236SA

40l Wash basin tank with removable tank



R2, 250.00 Ex. VAT



PA429A

Stand Alone Sanitiser Dispenser

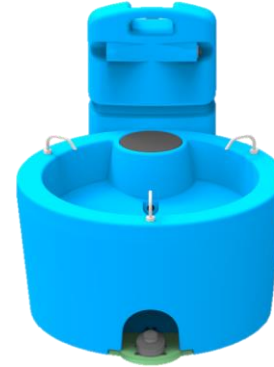


R 895.00 Ex. Vat



PA431A

Kiddie Hand Wash basin



R 3 700.00 Ex. Vat



PA428

Soap Dispenser



R 200.00 Ex. Vat



Please be wise  
& Sanitize !  
**PLEASE WASH YOUR HANDS**

## LB076SA 20L Wash Basin Tank with Jerry Can



- *Hands free foot pump*
- *Fresh and dirty water tank*
- *Removable jerry can (fresh water)*



# LB076SA 20L Wash Basin Tank with Jerry Can

Compress the foot pump  
to wet your hands



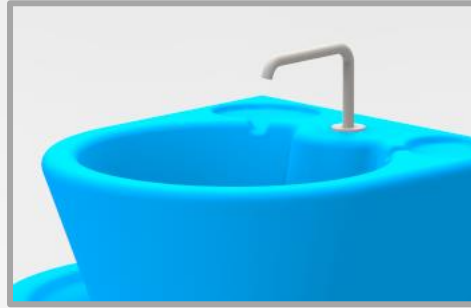
Apply soap to your hands



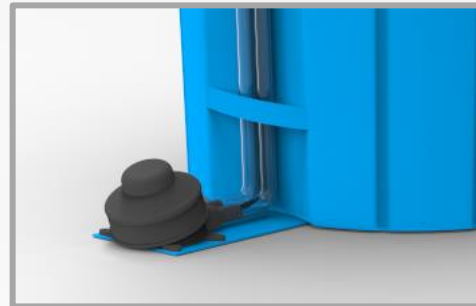
Wash your hands for 20  
seconds



Compress the foot pump  
to use water to remove  
the soap from your hands



Hand wash basin with  
water spout



Foot Pump

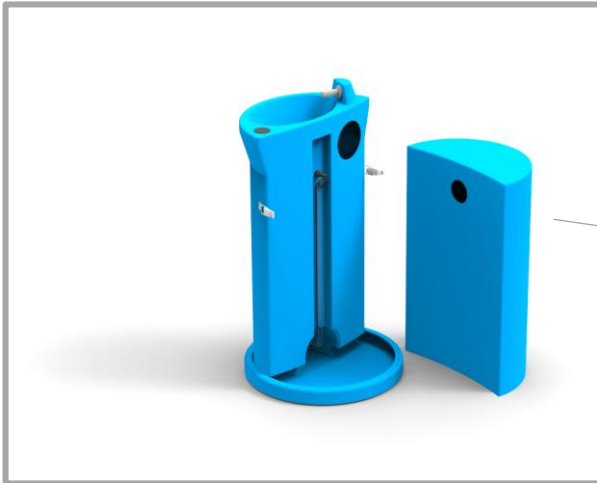


***PLEASE WASH YOUR HANDS***

# PA236SA 40L Wash Basin Tank



- *Hands Free Foot Pump*
- *Fresh Water Tank*
- *Removable Grey Water Tank*
- *Stabilizing Base Plate*



Removable dirty water tank



# PA236SA 40L Wash Basin Tank

Compress the foot pump  
to wet your hands



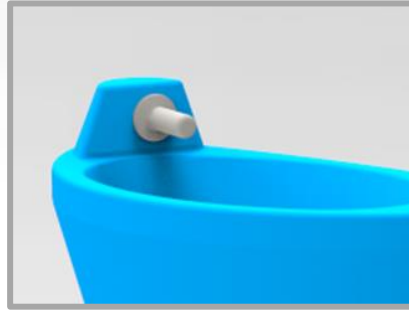
Apply soap to your hands



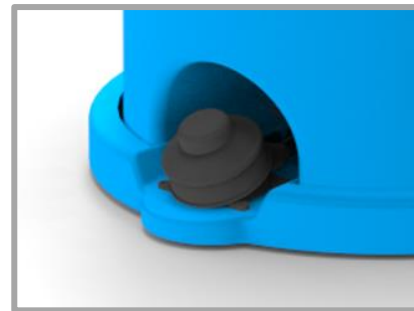
Wash your hands for 20  
seconds



Compress the foot pump  
to use water to remove  
the soap from your hands



Hand wash basin with  
water tap



Foot Pump



***PLEASE WASH YOUR HANDS***

## PA35 1SA 300L 3 Station Stand Alone Wash Basin

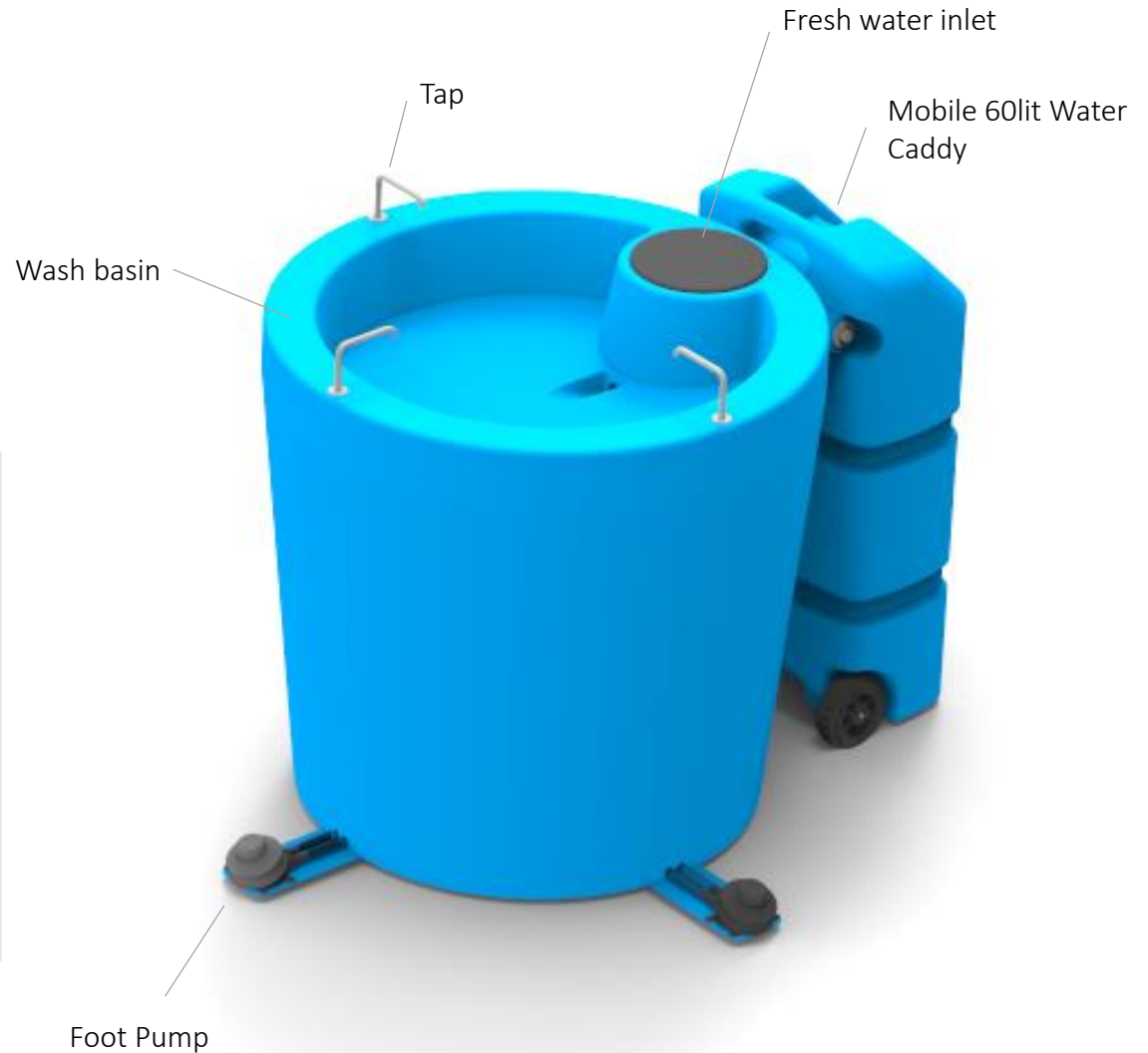
- *Hands Free Foot Pump*
- *Fresh Water Tank*
- *Removable Grey Water Tank*
- *Stabilizing Base Plate*

To refill the wash basin remove the plastic cap and pour water into the inlet.

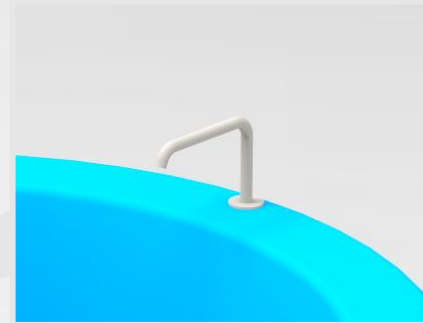


Note:

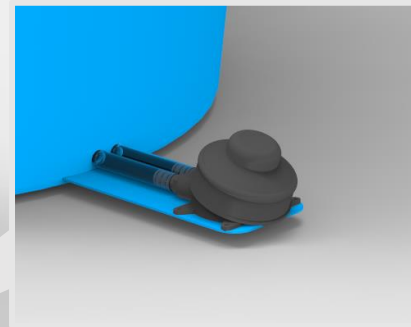
Install the caddy with the cap facing Away from the wash basin outlet and insert the outlet pipe into caddy water inlet.







Hand wash basin with water tap



Foot Pump

Compress the foot pump to wet your hands



Apply soap to your hands



Wash your hands for 20 seconds



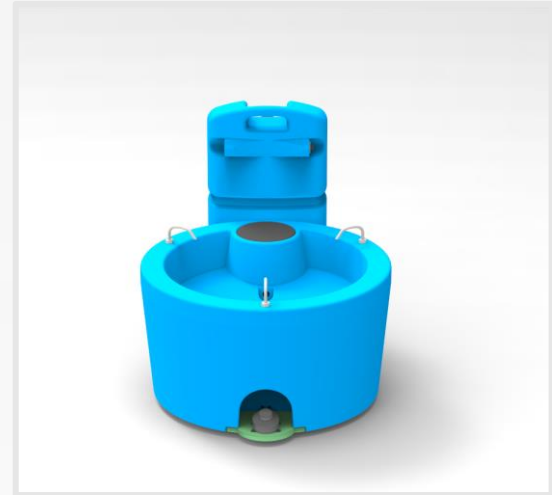
Compress the foot pump to use water to remove the soap from your hands

***PLEASE WASH YOUR HANDS***

## PA431A Kiddie Hand Wash basin



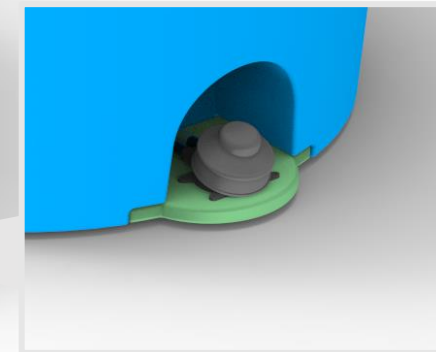
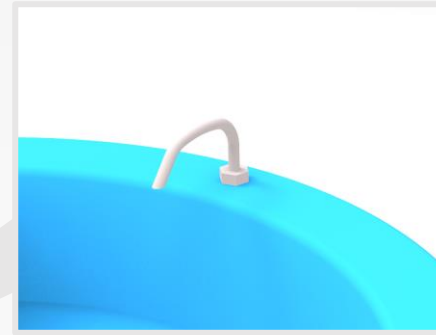
Note:  
Install the caddy with the cap facing Away from the wash basin outlet and insert the outlet pipe into caddy water inlet.



- *Hands Free Foot Pump*
- *Fresh Water Tank*
- *Removable Grey Water Tank*
- *Stabilizing Base Plate*



# PA431A Kiddie Hand Wash basin



Compress the foot pump  
to wet your hands



Apply soap to your hands



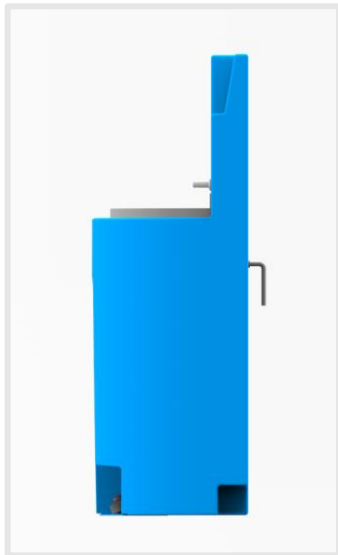
Wash your hands for 20  
seconds



Compress the foot pump  
to use water to remove  
the soap from your hands

***PLEASE WASH YOUR HANDS***

# PA22A Standard Wash Basin



Fresh water outlet spout

Surface recess allows for additional basin attachments

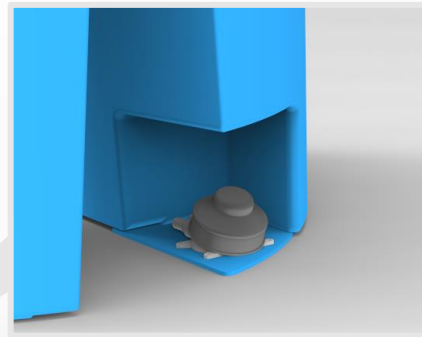
Foot Pump

Water outlet located in recess on side of the Wash basin

# PA22A Standard Wash Basin



Hand wash basin with  
water tap



Foot Pump

Compress the foot pump  
to wet your hands



Apply soap to your hands



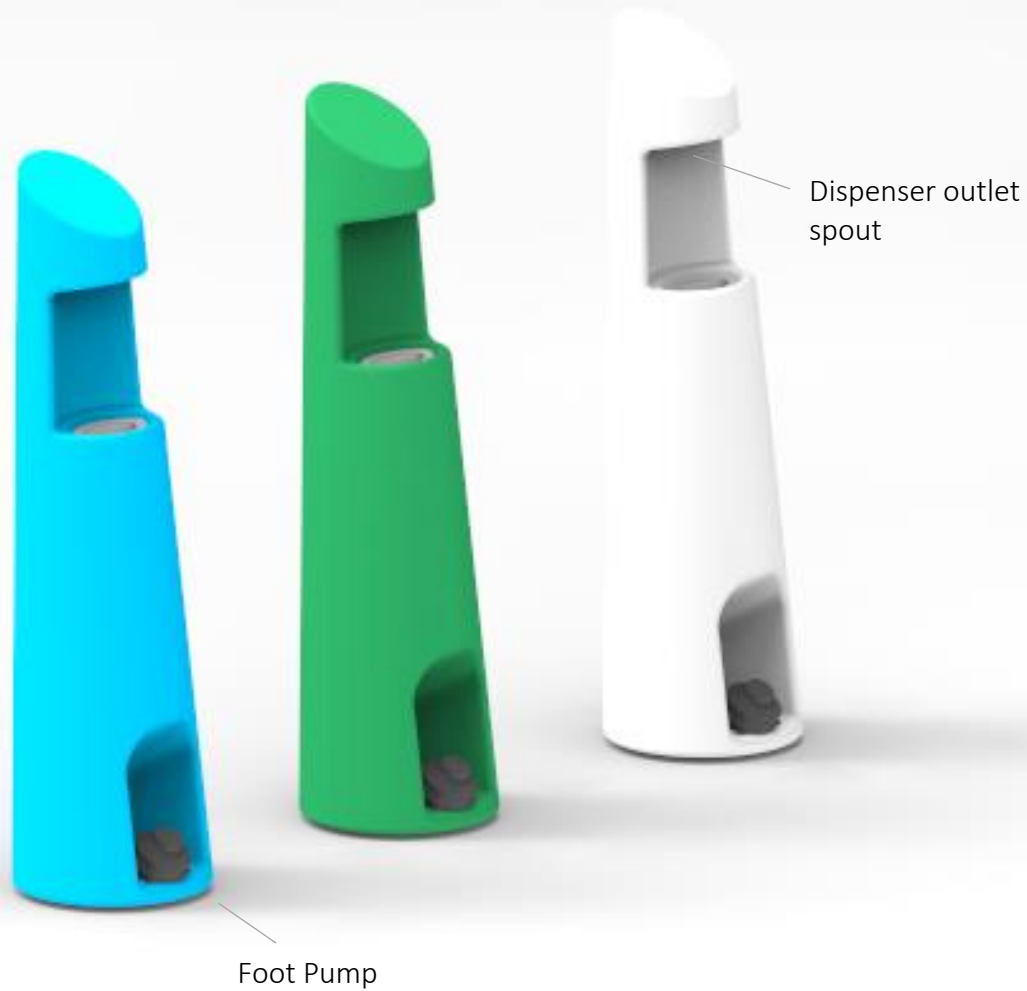
Wash your hands for 20  
seconds



Compress the foot pump  
to use water to remove  
the soap from your hands

***PLEASE WASH YOUR HANDS***

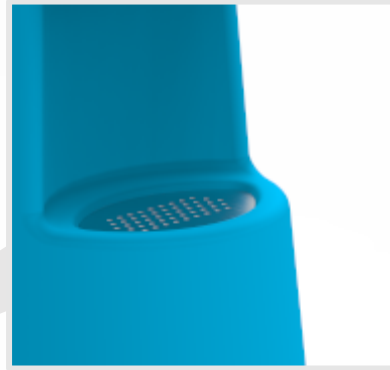
# PA429 – Stand Alone Sanitiser Dispenser



To refill soap dispenser remove stainless steel plate and refill with approx. 30litres of soap/ sanitising solution



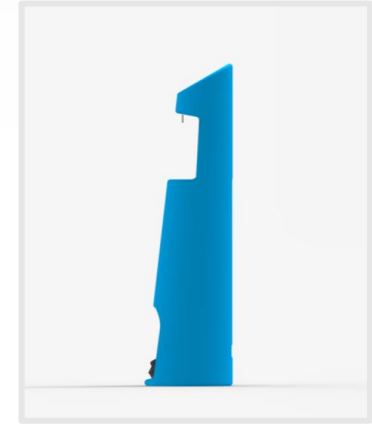
# PA429 – Stand Alone Sanitiser Dispenser



Hand wash basin inlet



Activated Foot pedal



Compress the foot pump to  
wet your hands



Apply sanitiser on both  
your hands and allow to dry

***PLEASE WASH YOUR HANDS***

# PA428 – Soap Dispenser

Wall mounting bracket



To refill dispenser remove the 50mm screwcap and fill approx. 1,4litres soap/ sanitizer into dispenser and securely close screwcap



Dispenser outlet



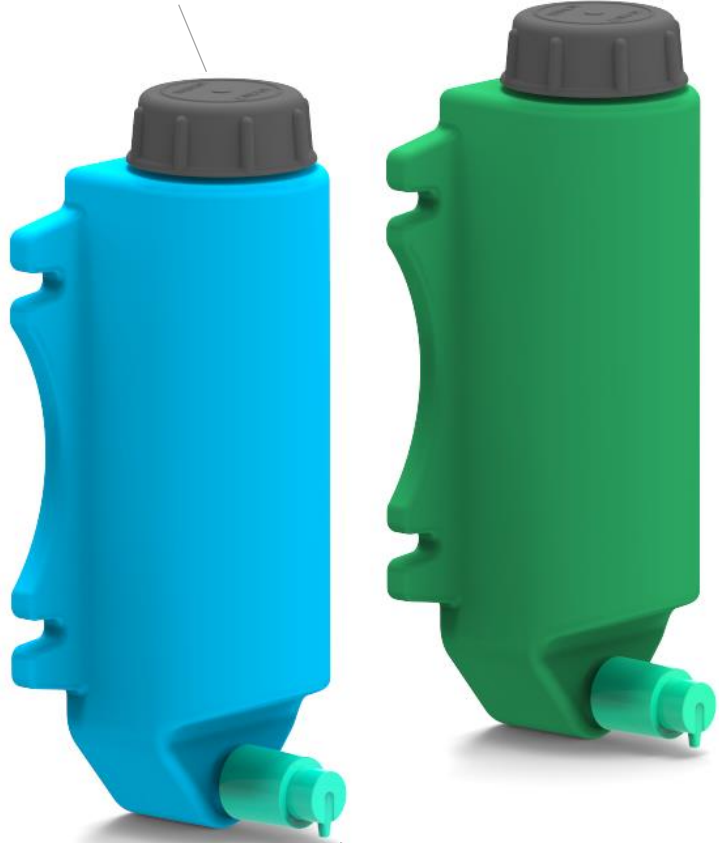
Using product wall mounting bracket attach the soap dispenser to any upright surface for convenient use.





# PA428 – Soap Dispenser

50mm Screwcap for refilling  
dispenser



Dispenser Outlet

Compress the dispenser outlet  
to wet your hands



Apply sanitizer to hands



Wash your hands for 20  
seconds and wait until dry

***PLEASE WASH YOUR HANDS***